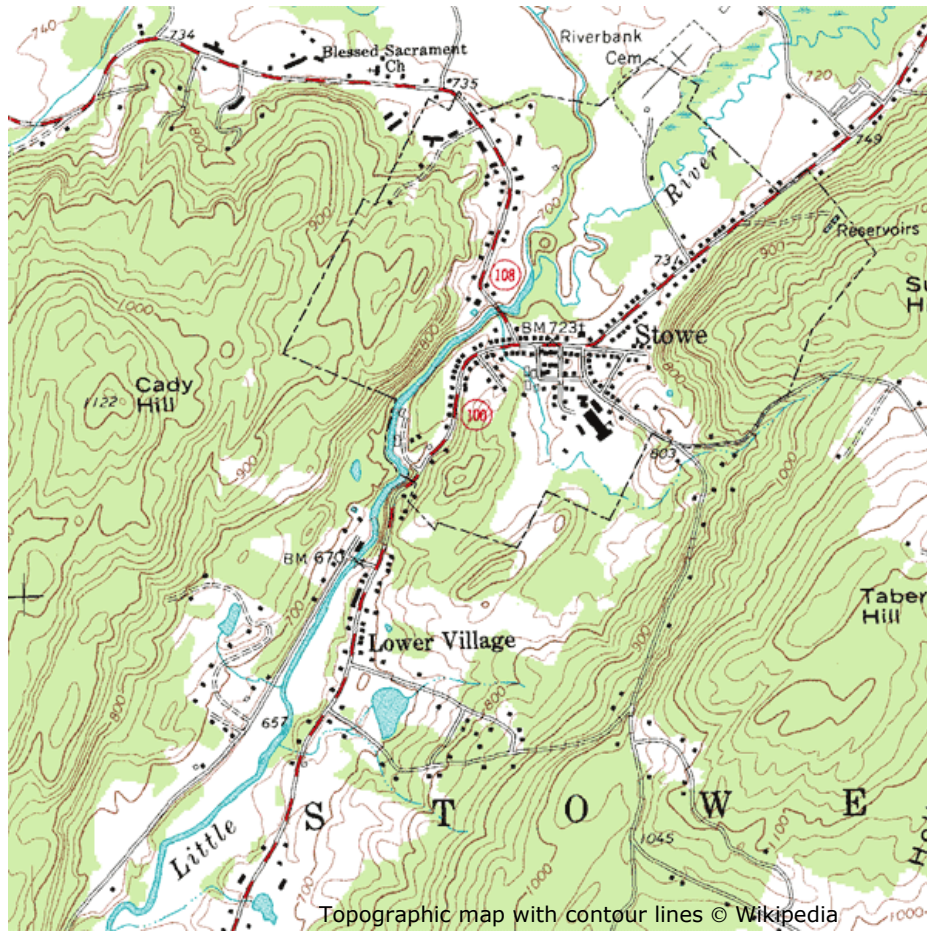


## EXERCISE 1

Look at the map and answer the following questions.



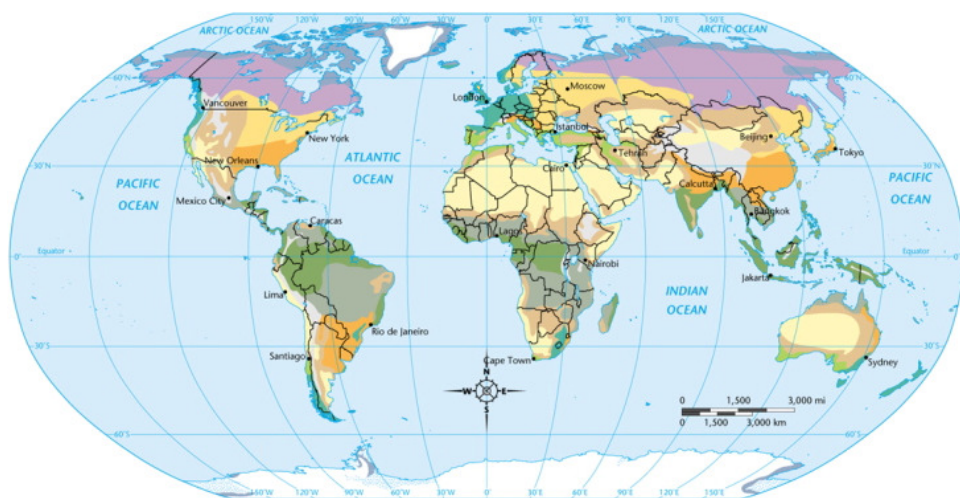
1. The contour lines are in intervals of \_\_\_\_\_.
  - a. 10
  - b. 100
  - c. 1000
2. Name the church shown.
  - a. Stowe
  - b. Lower Village
  - c. Blessed Sacrament
3. List two hills: \_\_\_\_\_, \_\_\_\_\_
4. Red lines show \_\_\_\_\_.
  - a. roads
  - b. water
  - c. mountains

5. What river is shown?
  - a. Riverbank
  - b. Little River
  - c. Reservoirs
  
6. What colour are the forests shown?
  - a. green
  - b. blue
  - c. red
  
7. Which map scale will show the most details?
  - a. 1:10,000
  - b. 1:15,000
  - c. 1:25,000
  
8. The contour lines on a map are useful for showing a \_\_\_\_\_ picture of the landscape.
  - a. rough
  - b. two-dimensional
  - c. three-dimensional

**GROUP ACTIVITY**

1. What is the name for the profession of mapmaking?
2. What is a mapmaker called?
3. Label the maps below and discuss the purpose of each: political map, physical map, climate map and road map.

1. \_\_\_\_\_



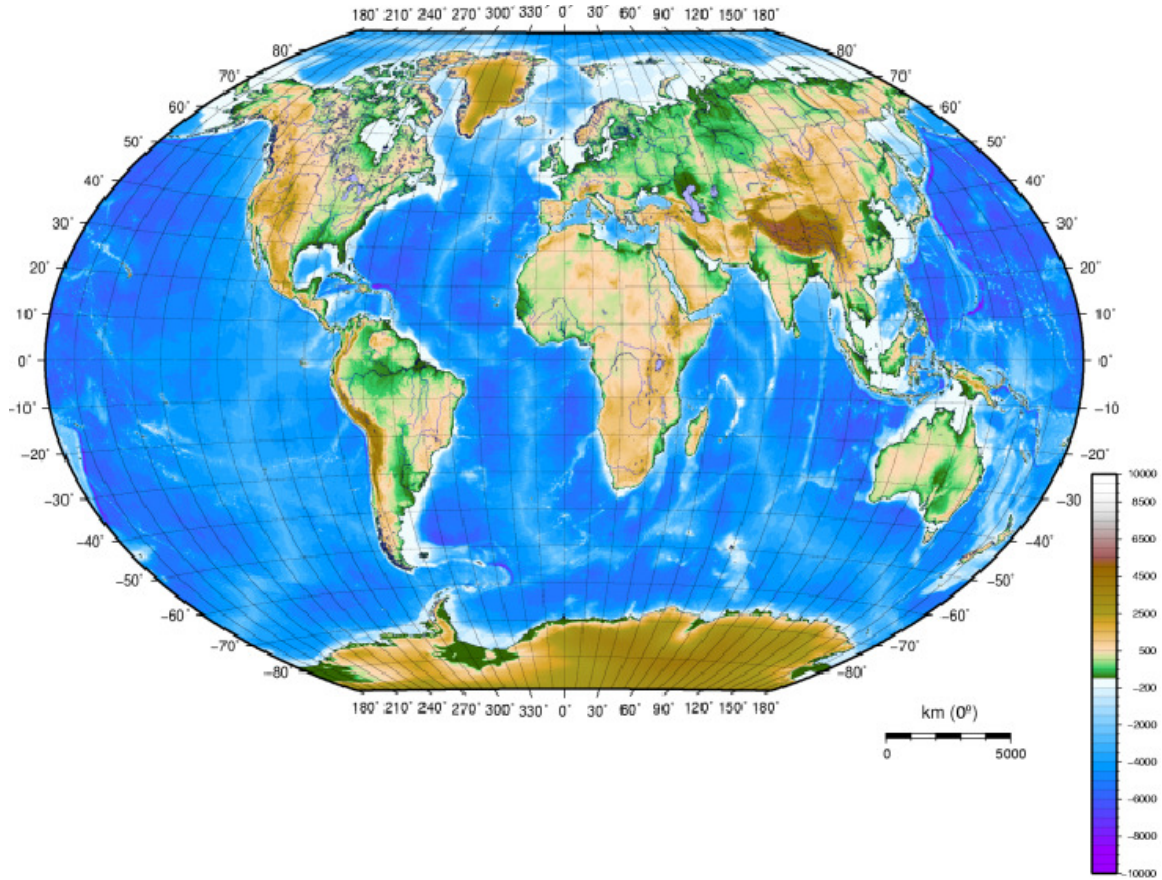
<b>Tropical</b>	<b>Dry</b>	<b>Moderate</b>	<b>Continental</b>	<b>Polar</b>	
Tropical wet	Semiarid	Mediterranean	Humid continental	Tundra	Non-permanent ice
Tropical wet and dry	Arid	Humid subtropical	Subarctic	Ice cap	
		Marine west coast		Highlands	

Map © Wikipedia

Purpose: \_\_\_\_\_  
\_\_\_\_\_  
\_\_\_\_\_

\*\*\*\*\*

2. \_\_\_\_\_

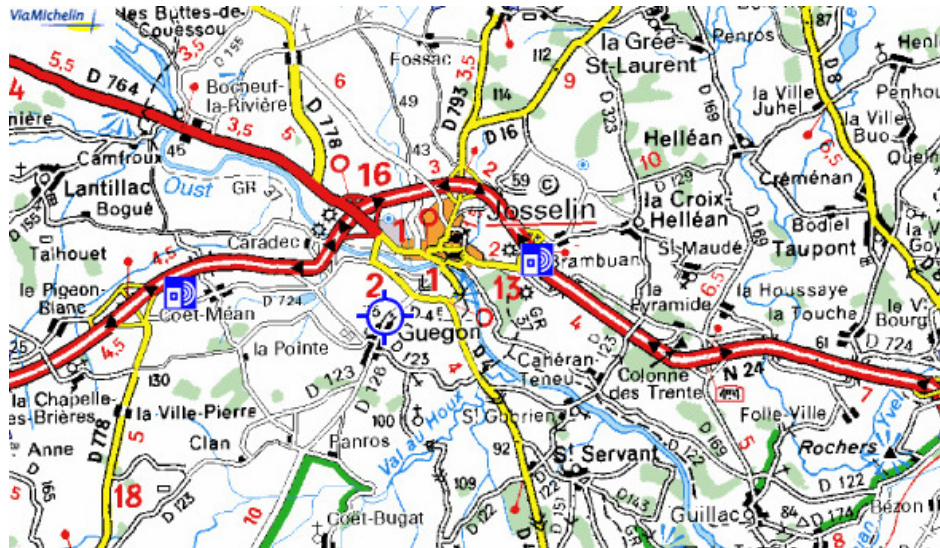


Purpose: \_\_\_\_\_  
\_\_\_\_\_  
\_\_\_\_\_

\*\*\*\*\*

Map © Wikipedia

3. \_\_\_\_\_



Purpose: \_\_\_\_\_  
\_\_\_\_\_  
\_\_\_\_\_

\*\*\*\*\*

4. \_\_\_\_\_



Maps © lavilleautady / flickr.com, worldmapsonline.com

Purpose: \_\_\_\_\_  
\_\_\_\_\_  
\_\_\_\_\_

\*\*\*\*\*