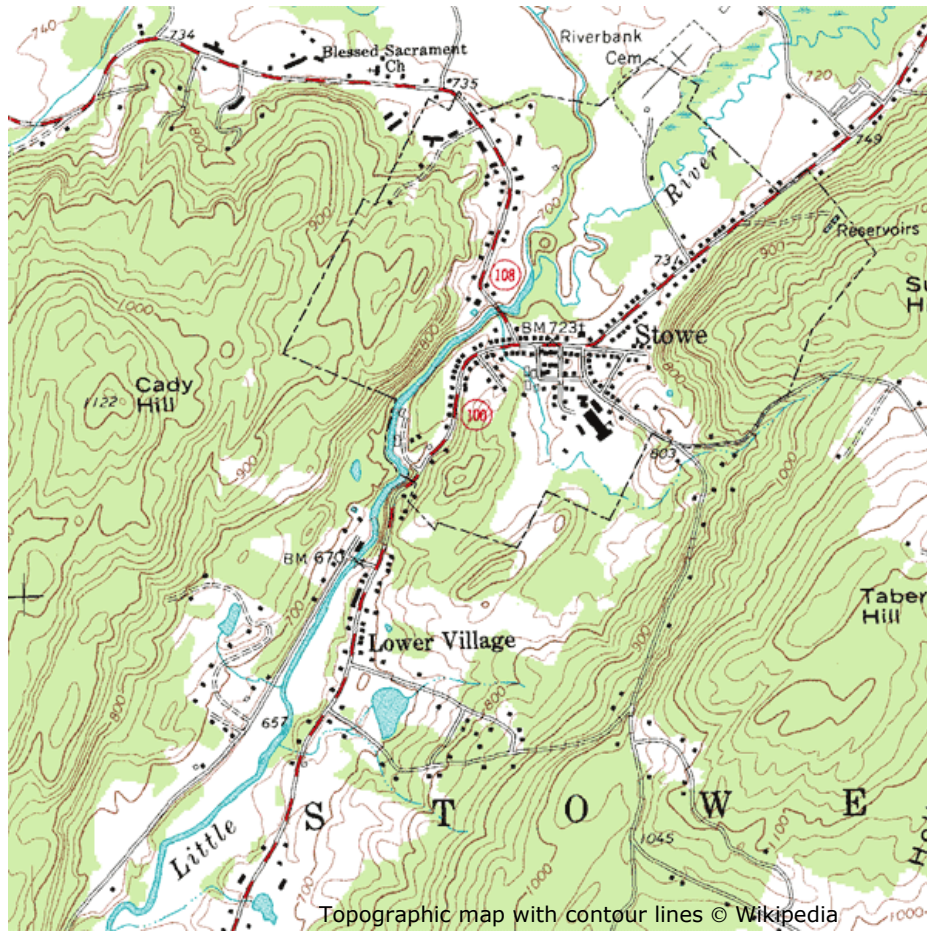


EXERCISE 1

Look at the map and answer the following questions.



- The contour lines are in intervals of _____.
 - 10
 - 100
 - 1000
- Name the church shown.
 - Stowe
 - Lower Village
 - Blessed Sacrament
- List two hills: _____ **Cady Hill** _____, _____ **Taber Hill** _____
- Red lines show _____.
 - roads
 - water
 - mountains

5. What river is shown?
 - a. Riverbank
 - b. Little River**
 - c. Reservoirs

6. What colour are the forests shown?
 - a. green**
 - b. blue
 - c. red

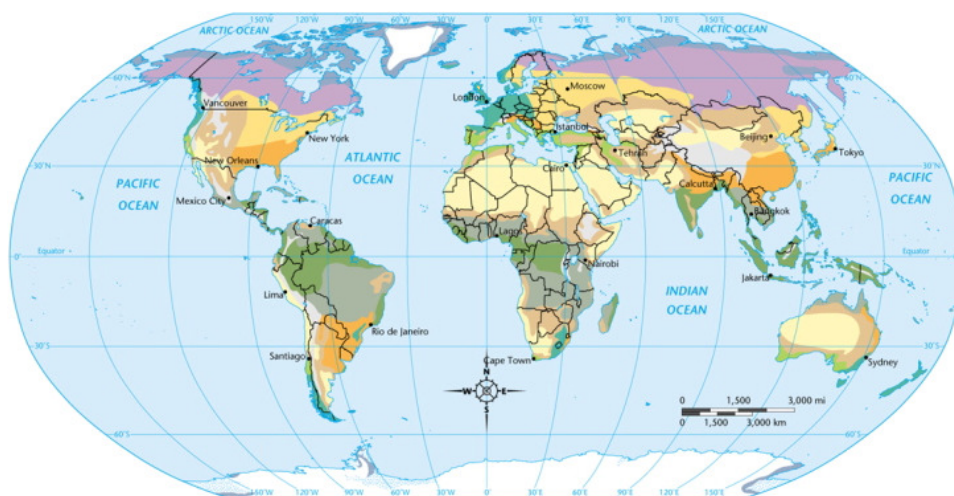
7. Which map scale will show the most details?
 - a. 1:10,000**
 - b. 1:15,000
 - c. 1:25,000

8. The contour lines on a map are useful for showing a _____ picture of the landscape.
 - a. rough
 - b. two-dimensional
 - c. three-dimensional**

GROUP ACTIVITY

1. What is the name for the profession of mapmaking? **cartography**
2. What is a mapmaker called? **cartographer**
3. Label the maps below and discuss the purpose of each: political map, physical map, climate map and road map.

1. _____ **Climate Map** _____

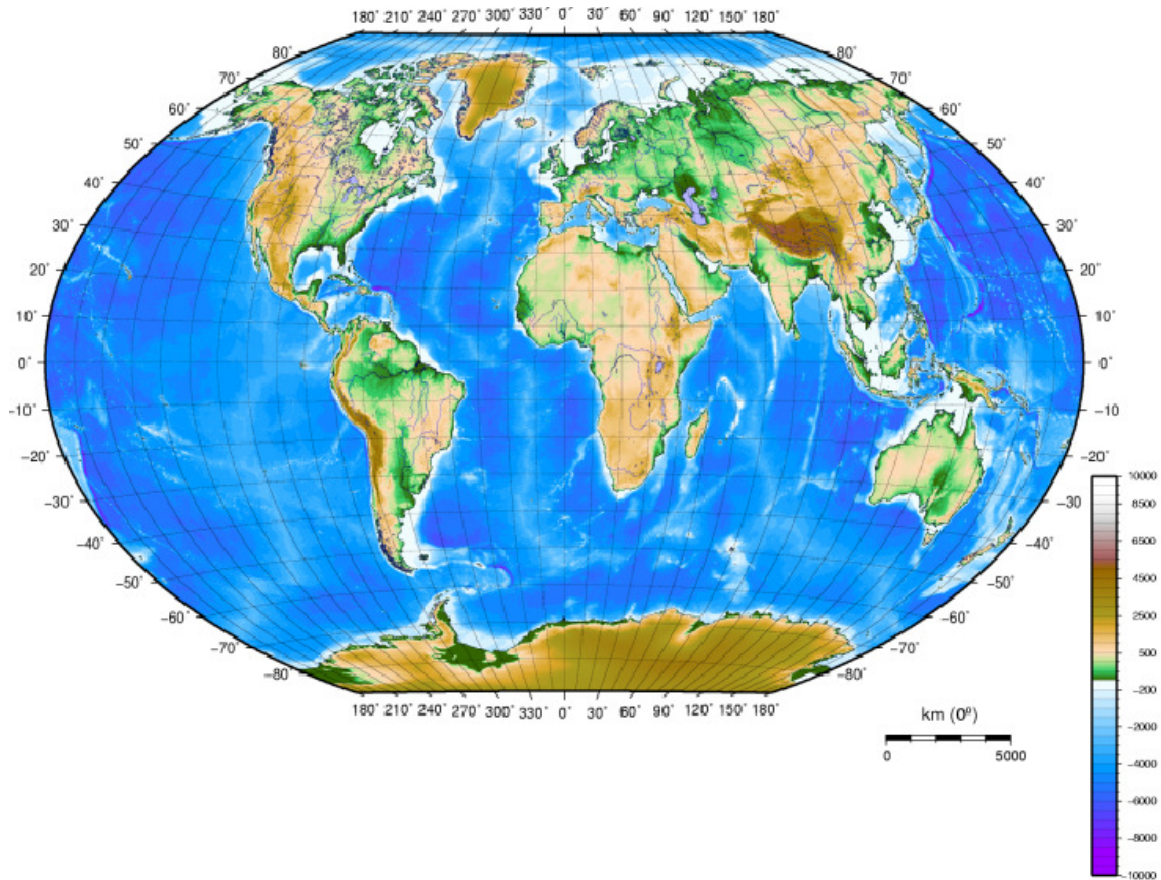


Tropical	Dry	Moderate	Continental	Polar	
Tropical wet	Semiarid	Mediterranean	Humid continental	Tundra	Non-permanent ice
Tropical wet and dry	Arid	Humid subtropical	Subarctic	Ice cap	
		Marine west coast		Highlands	

Map © Wikipedia

Purpose: To give general information about the climate (typical weather conditions such as temperature) and precipitation (rain and snow) of a region. Different colours are used to show different climates or precipitation zones.

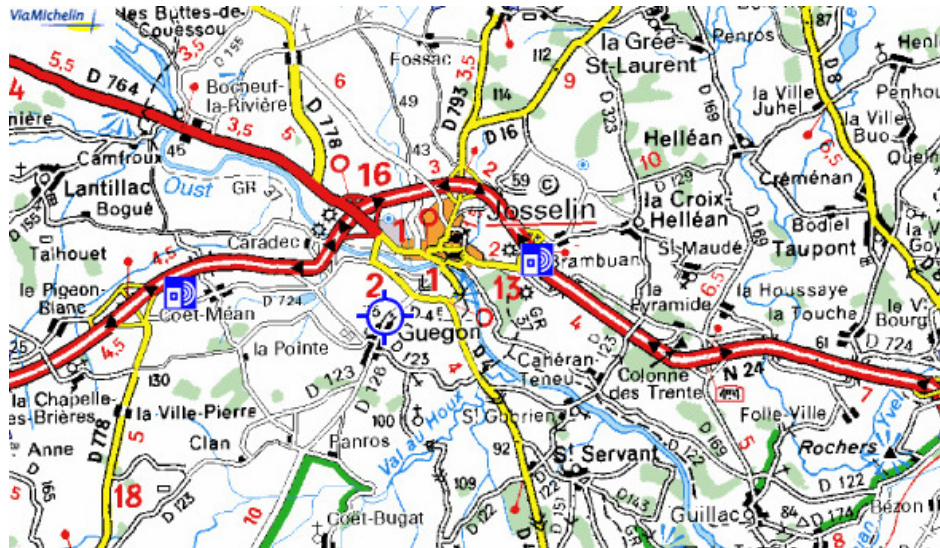
2. Physical Map



Purpose: To show the physical features of an area, such as the mountains, rivers and lakes. The water is shown in blue. Green is used to show lower elevations, and orange or brown to show higher elevations.

Map © Wikipedia

3. Road Map



Purpose: To show major roads and highways, airports, railway tracks, cities and other points of interest or important information in an area. Road maps are useful to plan trips and for obtaining driving directions.

4. Political Map



Maps © lavilleautady / flickr.com, worldmapsonline.com

Purpose: To show state and national boundaries, and capital and major cities. A capital city is usually marked with a star within a circle.
